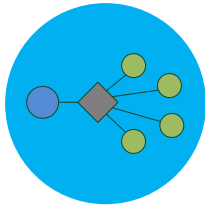
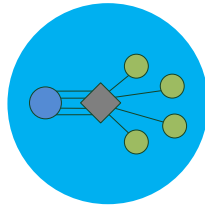




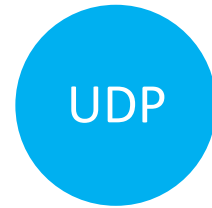
## APPLICATION



Multicast to Unicast



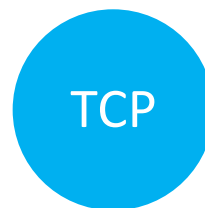
Unicast to Multicast



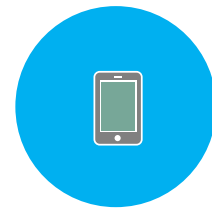
TS over UDP



TS over RTP



TS over TCP



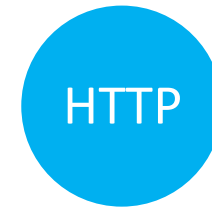
HLS in & out



RTSP/RTP



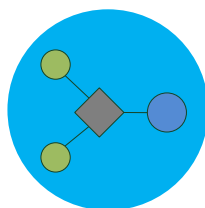
RTSP/TS



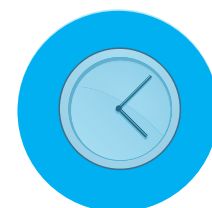
TS over HTTP



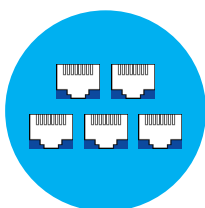
TS with Pro-MPEG  
FEC



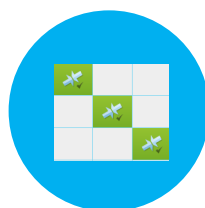
Redundant Input



Time-shift &  
Stream Delay



Multi Network  
Interface



A/V Router Style  
Web GUI



Teracrypt &  
AES Encryption

## TECHNICAL SPECIFICATION:

### MC-ROUTE SOFTWARE :

Stream protocol input:	TS over UDP, TS over RTP, TS over TCP, HLS, TS over HTTP, RTSP/RTP
Stream protocol output:	TS over UDP, TS over RTP, TS over TCP, HLS, RTSP/TS
Stream control:	RTSP server and client
Multiplex format:	ISO/IEC 13818-1 transport, ISO/IEC 14496-10 NAL (Network Abstraction Layer)
IP protocols:	HTTP, TCP/IP control protocol, UDP/RTP/TCP streaming, IGMP, SAP, unicast/multicast, SNMP traps, DHCP
Error correction:	PRO-MPEG FEC (forward error correction) and TCP
Encryption/decryption:	TeraCrypt, AES-128
Jitter buffer:	Adjustable size 1-15 sec
Management:	Web browser, SNMP traps, SOAP web service, TCP frame work protocol

### SYSTEM REQUIREMENTS:

CPU:	Intel Core i3 and higher
RAM	4 GByte
Network interfaces:	1GbE or 10GbE
Operating system:	Microsoft Windows 7/8.1/10/2008/2012 The following Windows OS, components are needed: Internet Information Services v7.0 or higher with version 6.0 compatibility .NET Framework v3.5 or higher .NET Framework v4.5

### MC-ROUTE HARDWARE PLATFORM:



### MC-ROUTE-1RU

CPU:	Intel Core i3
RAM:	8 GByte
Operating System	Win 10 Pro, 64bit
Network:	2x 10/100/1000TX Ethernet, RJ45, half/full duplex, auto-sensing or manual control
Streaming Traffic:	up to max. 500 Mb/s
Time-shift capacity:	150 GB (24h@14Mb/s)

## ENVIRONMENTAL:

Chassis:	19", 1 RU
Dimensions:	43x482x407 mm (HxWxD)
Weight:	6,15 kg
Temperature:	5 to +60°C environmental temperature
Power Supply:	260 Watt PSU
Limited Warranty:	1 year standard limited warranty. Warranty extensions available.

## ORDER INFORMATION:

MC-ROUTE-1RU	MC-ROUTE 1RU rack mount IPTV Stream Router with single power supply and with pre-installed MC-ROUTE software. Requires MC-ROUTE license.
MC-ROUTE-10	MC-ROUTE license for 10 simultaneous connections. Requires MC-SWMAIN for first 12 month of installation.
MC-ROUTE-50	MC-ROUTE license for 50 simultaneous connections. Requires MC-SWMAIN for first 12 month of installation.
MC-ROUTE-100	MC-ROUTE license for 100 simultaneous connections. Requires MC-SWMAIN for first 12 month of installation.
MC-SWMAIN	Annual software maintenance for MultiCoder. Free upgrades, same version number and eMail support.

## COMPLEMENTARY PRODUCTS:

DEC-300-HDSDI	H.264 HD & MPEG-2 HD decoder blade with HD-SDI-, embedded audio, analog video/audio output.
ENC-300-DVI	MPEG-4 AVC H.264 DVI encoder blade with DVI/HDMI input (with embedded audio).
ENC-300-HDSDI	MPEG-4 AVC H.264 SD/HD encoder blade with SD/HD SDI input (with embedded audio) and Composite, S-Video (Y/C), Component (Y <sub>b</sub> P <sub>r</sub> ) or analog VGA (RGB) input.
ENC-400-HDMI	H.264 and MJPEG HD/SD encoder board with HDMI input, loop through outputs and USB recording.
ENC-400-HDSDI	H.264 and MJPEG HD/SD encoder board with HDSDI input, loop through outputs and USB recording.
ENC-500-HDMI-PORTABLE	H.265 and H.264 HD/SD portable encoder device with HDMI input, available in Q3 2016

\* Note: Some features to be introduced with upcoming upgrades